



Features and Benefits

Sophisticated practicality.

Acacia Hill expertly blends the practical benefits you expect from nylon with discerning aesthetic qualities traditionally only associated with natural fibres.

Rich, organic texture.

Acacia Hill is not only beautiful, but outstandingly effective at concealing soiling.

Luxurious underfoot.

Acacia Hill's large, tufted-loop pile feels delightful to touch, yet is rated 'extra heavy duty' for residential use, and 'medium duty' for commercial.

Modern style.

With chicly heathered colours, and geometric patterns, Acacia Hill provides an ideal foundation for contemporary interiors.

Australian quality.

Designed and manufactured in Australia, Acacia Hill is colourfast, stain resistant, anti-static and fire retardant.



Acacia Hill | Specifications

Description	Textured Tufted Loop Pile
Pile Content	100% BCF Solution Dyed Nylon
Gauge	3/16th
Total Pile Weight	680g/m ² (20oz/yd ²)
Pile Height	High 5.0mm ± 1mm Low 3.0mm ± 1mm
Total Product Thickness	8.0mm ± 1mm
Width	366cm
Primary Backing	Woven polypropylene
Secondary Backing	Blue Stripe Synthetic backing
Flammability	Fire Rated Carpet. Please contact Customer Care for more information.
ACCS Rating	
Residential	Extra Heavy Duty (5*)
Contract	Medium Duty (2*)
Variation	Specifications subject to ± 5% variation
Dye Batch Variation	Colour variation may occur from batch to batch
Guarantees	
Conditions apply	15 year Residential Wear 15 year Colourfast*
Pattern Repeat	Width 10mm Length 10mm
Certification	Manufactured under an ISO 9001 - Certified Quality Management System Produced within an ISO 14001 - Certified Environmental Management System

- 
100%
Australian Owned & Made
★★★★★
- 
Durability
★★★★★
- 
Easy to Care
★★★★★
- 
Pet Friendly
★★★★★
- 
Track Resistant
★★★★★

Solid shade carpets may exhibit colour streaking. Tufting of this carpet may incur **shift lines** across the width of the carpet. This is not a manufacturing fault and will not affect the performance of this carpet. **Dye batch colour variations** may occur from batch to batch. **Patterned carpets** with directional designs may be subject to pattern distortion. Exact pattern match cannot be guaranteed.

Our goods come with guarantees that cannot be excluded under the Australian Consumer Law. You are entitled to a replacement or refund for a major failure and compensation for any other reasonably foreseeable loss or damage. You are also entitled to have the goods repaired or replaced if the goods fail to be of acceptable quality and the failure does not amount to a major failure.



FOR MORE INFORMATION
SCAN QR CODE



Alton 1249



Kennedy 1250



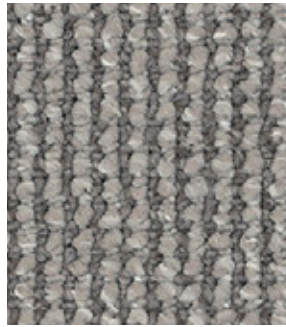
Atkins 1253



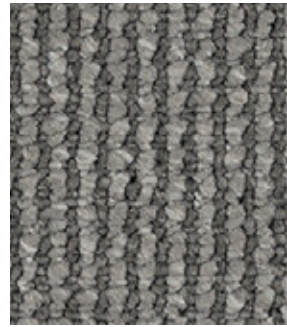
Mawson 1251



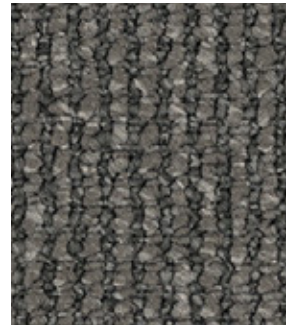
Millrose 1255



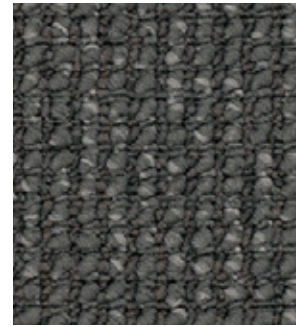
Longford 1252



Karson 1254



Myrtle 1256



Magnolia 1248