



100%  
Solution Dyed  
Polypropylene



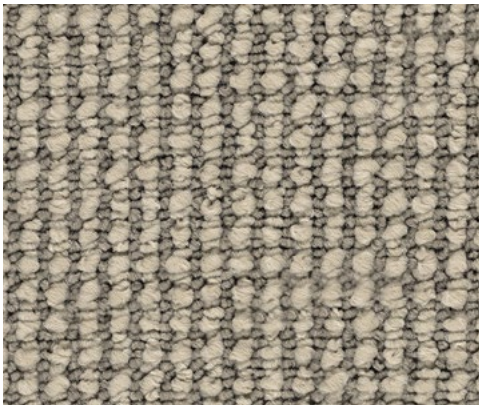
Featuring Blue  
Stripe Synthetic  
Backing



Stain and Soil  
Resistant  
Properties



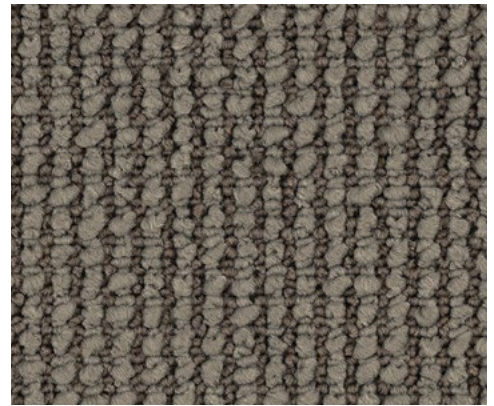
Hardwearing  
for Active  
Environments



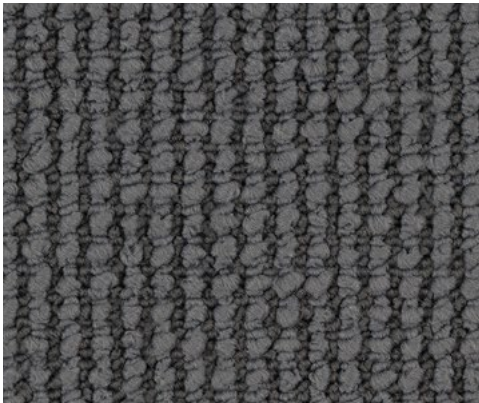
Alma 1406



Mews 1407



Cedar 1401



Elm 1408



Deer 1402



Fawn 1405

# POLYPROPYLENE CARPET



Guarantee



ANTI-STATIC  
Lifetime

Guarantee



RESIDENTIAL  
Heavy Duty

## Features and Benefits

### Quality made carpet.

Grove raises the bar for premium polypropylene carpet, providing an outstanding combination of high-specification quality and affordability for homeowners, landlords, builders and developers.

### Modern style.

With a combination of chicly heathered colours, geometric patterns and a rich, organic texture, Grove provides an ideal foundation for contemporary interiors.

### Built to last.

Rated heavy duty for residential applications, Grove is a tough stain resistant carpet for active families.

### Virtually cares for itself.

Grove's polypropylene fibres are impervious to staining, will not absorb dyes, and will not absorb moisture. This ensures exceptional ease of maintenance, even in high humidity.

### Colourfast and made to last.

Designed to retain its aesthetic appeal for years to come, Grove's colours will not rub off or bleed, and strongly resist fading from sunlight and general wear.

## Specifications

|                                  |  |
|----------------------------------|--|
| <b>Description</b>               | Textured Tufted Loop Pile  |
| <b>Pile Content</b>              | 100% Solution Dyed Polypropylene                                     |
| <b>Gauge</b>                     | 3/16th   |
| <b>Width</b>                     | 366cm  |
| <b>Primary Backing</b>           | Woven polypropylene  |
| <b>Secondary Backing</b>         | Blue Stripe Synthetic Backing  |
| <b>Traffic Class</b>             | Heavy Duty Residential   |
| <b>Variation</b>                 | Specifications subject to $\pm$ 5% variation                         |
| <b>Dye Batch Variation</b>       | Colour variation may occur from batch to batch                       |
| <b>Guarantees</b>                | 7 year Residential*<br>Lifetime Anti-static*                         |
| <small>*conditions apply</small> |  |
| <b>Pattern Repeat</b>            | Length 10mm<br>Width 10mm  |
| <b>Environmental</b>             | Quality Assured to ISO 9001 & Environmental Management System 14001. |

**Solid shade** carpets may exhibit colour streaking. Tufting of this carpet may incur **shift lines** across the width of the carpet. This is not a manufacturing fault and will not affect the performance of this carpet. **Patterned carpets** with directional designs may be subject to pattern distortion. Exact pattern match cannot be guaranteed.

Our goods come with guarantees that cannot be excluded under the Australian Consumer Law. You are entitled to a replacement or refund for a major failure and compensation for any other reasonably foreseeable loss or damage. You are also entitled to have the goods repaired or replaced if the goods fail to be of acceptable quality and the failure does not amount to a major failure.