

Acacia Hill

Solution Dyed Nylon Carpet



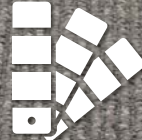
Constructed from 100% SD Nylon Yarn



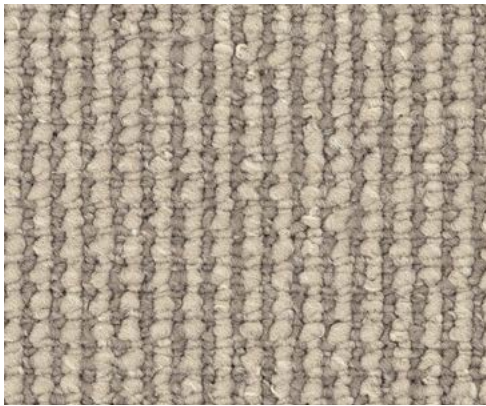
Fire Resistant for Multi Residential Applications



Low Volatile Organic Compound (VOC)



Colourfast for Superior Appearance Retention



Alton 1249



Mawson 1251



Murdoch 1241



Longford 1252



Magnolia 1248



Archer 1245

SOLUTION DYED NYLON CARPET



Guarantee



COLOURFAST
15 Years

Guarantee



RESIDENTIAL
15 years
Extra Heavy Duty

Features and Benefits

Sophisticated practicality.

Acacia Hill expertly blends the practical benefits you expect from nylon with discerning aesthetic qualities traditionally only associated with natural fibres.

Rich, organic texture.

Acacia Hill is not only beautiful, but outstandingly effective at concealing soiling.

Luxurious underfoot.

Acacia Hill's large, tufted-loop pile feels delightful to touch, yet is rated 'extra heavy duty' for residential use, and 'medium duty' for commercial.

Modern style.

With chicly heathered colours, and geometric patterns, Acacia Hill provides an ideal foundation for contemporary interiors.

Australian quality.

Designed and manufactured in Australia, Acacia Hill is colourfast, stain resistant, anti-static and fire retardant.

Specifications

Description	Textured Tufted Loop Pile
Pile Content	100% BCF Solution Dyed Nylon
Gauge	3/16th
Pile Height	High 5.5mm ± 1mm Low 4.5mm ± 1mm
Width	366cm
Primary Backing	Woven polypropylene
Secondary Backing	Blue Stripe Synthetic backing
Flammability	Fire Rated Carpet. Please contact our Customer Care Team for more information.
Traffic Class	Extra Heavy Duty Residential
Variation	Specifications subject to ± 5% variation
Dye Batch Variation	Colour variation may occur from batch to batch
Guarantees <small>*conditions apply</small>	15 year Residential* 15 year Colourfast*
Pattern Repeat	Length 10mm Width 10mm
Environmental	Quality Assured to ISO 9001 & Environmental Management System 14001.

Solid shade carpets may exhibit colour streaking. Tufting of this carpet may incur **shift lines** across the width of the carpet. This is not a manufacturing fault and will not affect the performance of this carpet. **Patterned carpets** with directional designs may be subject to pattern distortion. Exact pattern match cannot be guaranteed.

Our goods come with guarantees that cannot be excluded under the Australian Consumer Law. You are entitled to a replacement or refund for a major failure and compensation for any other reasonably foreseeable loss or damage. You are also entitled to have the goods repaired or replaced if the goods fail to be of acceptable quality and the failure does not amount to a major failure.